

FINE CONTROLS (UK) LTD



Fine Controls have been supplying process controls & instrumentation equipment since 1994, & now serves an ever expanding customer base, both in the UK & globally.

We offer a full range of valve & instrumentation products & services, with our product range representing leading technologies & brands:

Flow: Flow Meters & Transmitters, Flow Switches, Flow Control Valves & Batch Control Systems

Temperature: Temperature Probes & Thermowells, Temperature transmitters, Temperature Regulators & Temperature Displays

Level: Level Transmitters & Switches

Pressure: Pressure Gauges & Transmitters, Precision & High Pressure Regulators & I-P Converters, Volume boosters.

Precision Pneumatics: Pressure Regulators, I-P Converters, Volume Boosters, Vacuum Regulators

Valves: Solenoid & Pneumatic Valves, Control Valves & Positioners, Actuated Ball, Globe or Diaphragm Valves & Isolation Valves

Services: Repair, Calibration, Panel Build, System Design & Commissioning

A rotork® Brand
FAIRCHILD



bürkert



SIEMENS



alcon
SOLENOID VALVES

A rotork® Brand



MIDLAND-ACS
A rotork® Brand



Honeywell



Bourdon
Baumer Group



SOLDO
CONTROLS

A rotork® Brand



Fine Controls (UK) LTD, Bassendale Road, Croft Business Park,
Bromborough, Wirral, CH62 3QL UK
Tel: 0151 343 9966
Email: sales@finecontrols.com

1500 SERIES MANUALLY OPERATED (PAD)



- Specifically designed for Severe Offshore Environments
- Compact
- Closed centre
- Manually operated
- 3/2 and 5/2 operation
- Panel mounted option

General Description

A range of compact 3/2 and 5/2 pilot operated spool valves in Stainless Steel for use on gases.

Working Temperature Range

- Valve only version
-20°C to +180°C (-4°F to +356°F)
- Low temperature version
-50°C (-58°F) (optional)

Maximum Flow

- 6 bar (87 psi),
1 bar (14.5 psi) differential
- 3/2 valves - 1000 L/min (35.3 SCFM)
- 5/2 valves - 1200 L/min (42.4 SCFM)

Operating Medium

- Gases - Filtered non-lubricated air, inert, sweet (natural) gases

Ports NPT (BSP option available)

- 1/4" NPT
- 1/8" NPT pilot ports

Working Pressure (gases & liquids)

- 12 bar (174 psi) Maximum

Operating Force

- 10 bar (145 psi) differential

3/2	5/2
76 N (17 lbf)	89 N (20 lbf)

Cv (Kv)

- 3/2 valves - 1.0 (15)
- 5/2 valves - 1.2 (17)

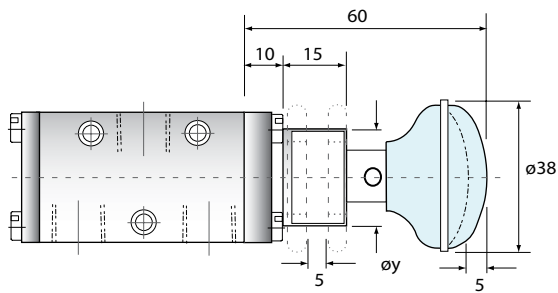
1500 SERIES MANUALLY OPERATED (PAD)

Note:

- All dimensions given in mm

Construction Materials

- Body: 316 Stainless Steel
- Spool: 316 Stainless Steel
- Spring: 316 Stainless Steel
- Seals: Fluoroelastomer
- Pad: Phenolic Resin



3/2 Normally
Closed



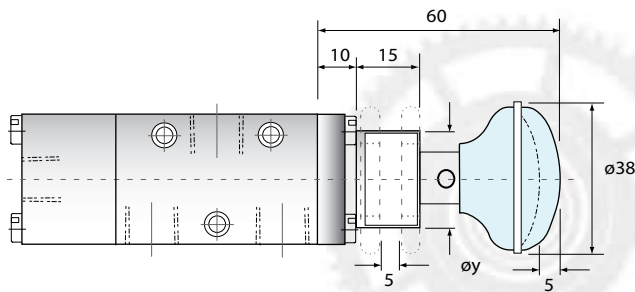
3/2 Diverter



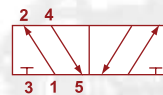
3/2 Normally
Open



3/2 Changeover



5/2



Panel mounting thread ϕY is 15/16" dia. x 26 TPI
Whit Form.

