

3500 Series air service units – 3/4" to 1" Filter Regulators

A 316L stainless steel combined unit for filtration and regulation of compressed air and gases for the actuation industries.

Features and Benefits

- Specifically designed for severe environments
- 40 micron element as standard, 5 micron option available
- Non or self-relieving
- 316L stainless steel construction
- Large flow characteristics
- Bowl capacity window

Media & Ambient Temperature Range

- Standard temperature
-20 to +80 °C (-4 to +176 °F)
- Low temperature version
-50 to +80 °C (-58 to +176 °F)

Note: When product is ordered as /ATEX ambient temperature is limited to +40 °C (104 °F) Ex II 2G c T6.

Maximum Relief Flow

- At 2 bar (29 psi) secondary pressure
0.5 cc/sec (0.03 cu in/sec)

Flow

At 7 bar (102 psi) supply pressure, 6 bar (87 psi) secondary pressure, 1 bar (14.5 psi) pressure drop.

- 7,800 l/min (274 SCFM)

Maximum Inlet Pressure

- Manual drain - 20 bar (290 psi)
- Automatic drain - 17 bar (247 psi)

Ports NPT

(BSP option available - consult factory for part codes)

- 3/4", 1"

Gauge Ports

- 1/8" NPT

Relief Vent Port

- 1/8" NPT (fitted with breather)
- Note: Not fitted on low temperature option



Bowl Capacity

- 260 cc (15.87 cu ins)

Accessories Available

- Mounting brackets
- Stainless steel pressure gauge

See page 26-28 for ordering details

Operating Media

- Gases - air, inert gas and sweet (natural) gases

Note: To prevent freezing of the condensate within the product, the media dew point must be at least 10 °C below the lowest ambient temperature the product will be exposed to.

Construction Materials

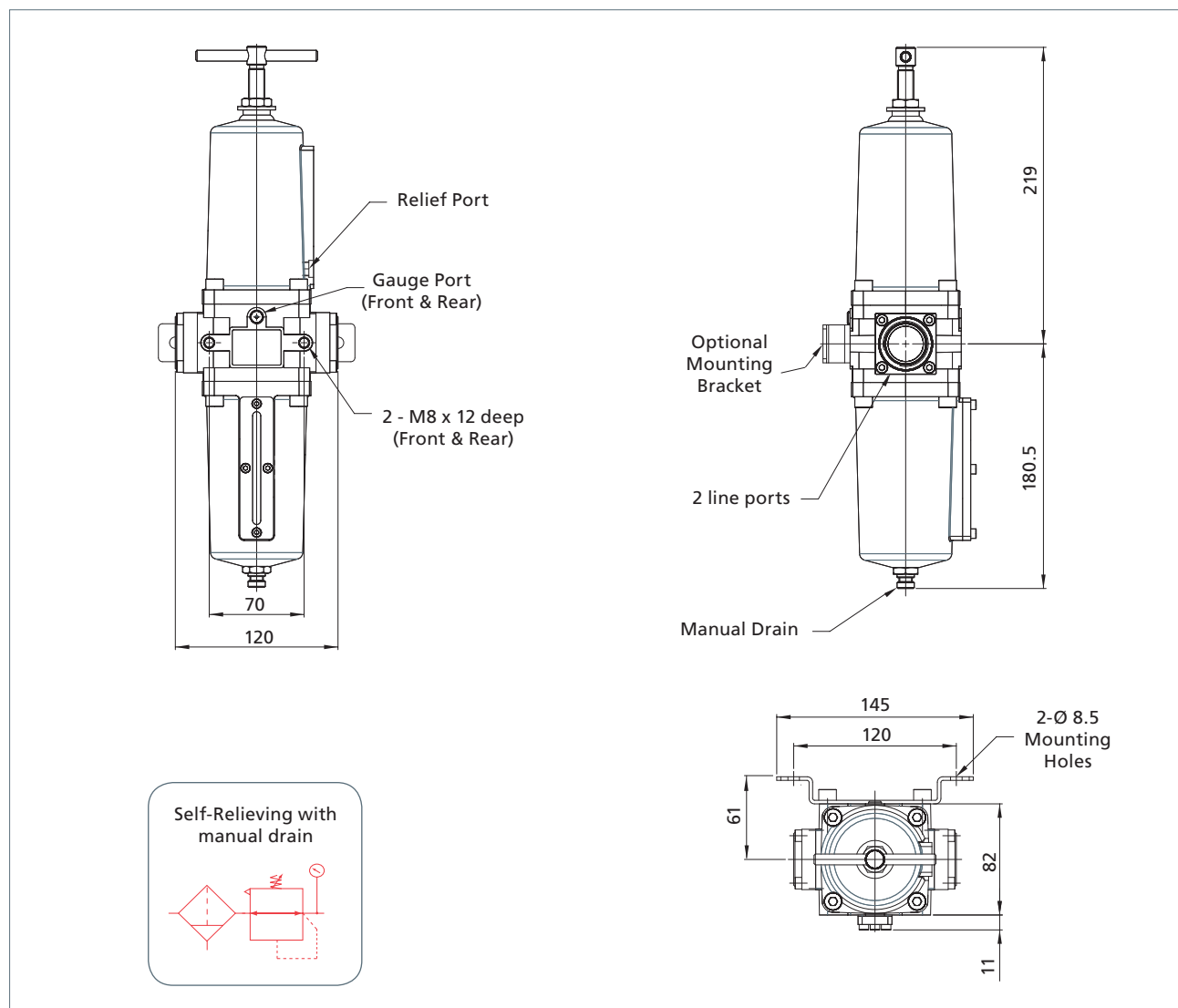
- Body/bonnet/bowl and internals: 316L stainless steel
Note: on auto-drain version float is nylon, polyoxymethylene and rubber.
- Element: 40 micron sintered polypropylene (5 micron option available - suffix product code with '05')
- Seals: Standard option - Fluoroelastomer
Low temperature option - EPDM and Fluorosilicone¹

¹ The use of lubrication upstream of the product is not recommended for low temperature applications.

Certification Options Available

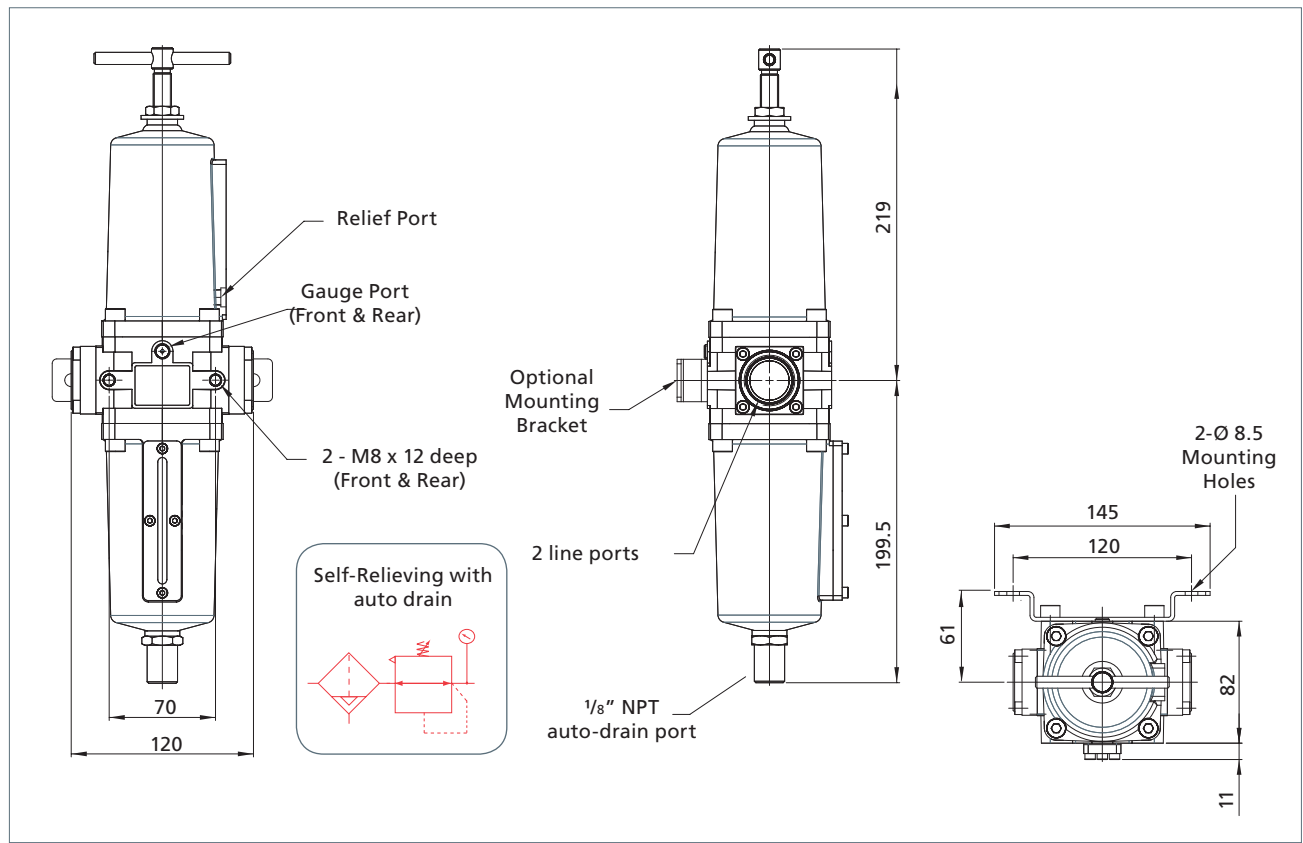


3500 Series air service units – 3/4" to 1" Filter Regulators - Engineering Drawings (manual drain)



Size	Filter	Regulated Pressure bar (psi)	Max Inlet Pressure bar	Weight kg	Cv
3/4"	Manual Drain	0.50 to 2.0 (7.2 to 29)	20	5.75	6.5
1"				5.75	8.8
3/4"	Manual Drain	0.50 to 4.0 (7.2 to 58)	20	5.75	6.5
1"				5.75	8.8
3/4"	Manual Drain	0.50 to 7.0 (7.2 to 102)	20	5.75	6.5
1"				5.75	8.8
3/4"	Manual Drain	0.50 to 10.0 (7.2 to 145)	20	5.75	6.5

3500 Series air service units – 3/4" to 1" Filter Regulators - Engineering Drawings (auto drain)



Size	Filter	Regulated Pressure bar (psi)	Max Inlet Pressure bar	Weight kg	Cv
3/4"	Auto Drain	0.50 to 2.0 (7.2 to 29)	17	5.75	6.5
1"				5.75	8.8
3/4"	Auto Drain	0.50 to 4.0 (7.2 to 58)	17	5.75	6.5
1"				5.75	8.8
3/4"	Auto Drain	0.50 to 7.0 (7.2 to 102)	17	5.75	6.5
1"				5.75	8.8
3/4"	Auto Drain	0.50 to 10.0 (7.2 to 145)	17	5.75	6.5
1"				5.75	8.8

3500 Series Coding Chart - Filter Regulators

Additional Options

Size		Type		Material		Seals °C (°F)		Regulated Pressure bar (psi)		Port Style		Filter Element (40 micron standard)		Approval	
6	3/4"	FRM	Manual Drain	S	Stainless	V	Standard -20 (-4)	02	2 (29)	1	BSP	05	5 micron	/ATEX	Ex II 2G c T6
8	1"	FRA	Auto Drain			L ¹	Low Temp -50 (-58)	04	4 (58)	2	NPT		w/o option		w/o option
		FRN	Manual Drain Non Relieving					07	7 (102)						
		FRB	Auto Drain Non Relieving					10	10 (145)						
•		•		S		•		•		•		•		•	

¹ Low temperature version not available in auto-drain

3500 Series air service units – ¾" to 1" Filters

A 316L stainless steel unit for filtration of compressed air and gases for the actuation industries.

Features and Benefits

- Specifically designed for severe environments
- 40 micron element as standard, 5 micron option available
- 316L stainless steel construction
- Large flow characteristics
- Bowl capacity window

Media & Ambient Temperature Range

- Standard temperature
-20 to + 80 °C (-4 to +176 °F)
- Low temperature version
-50 to +80 °C (-58 to +176 °F)

Note: When product is ordered as /ATEX ambient temperature is limited to +40 °C (104 °F) Ex II 2G c T6.

Flow

At 7 bar (102 psi) supply pressure, 0.35 bar (5 psi) pressure drop.

- 10,020 l/min (353 SCFM)

Maximum Inlet Pressure

- Manual drain - 20 bar (290 psi)
- Automatic drain - 17 bar (247 psi)

Ports NPT

(BSP option available - consult factory for part codes)

- ¾", 1"

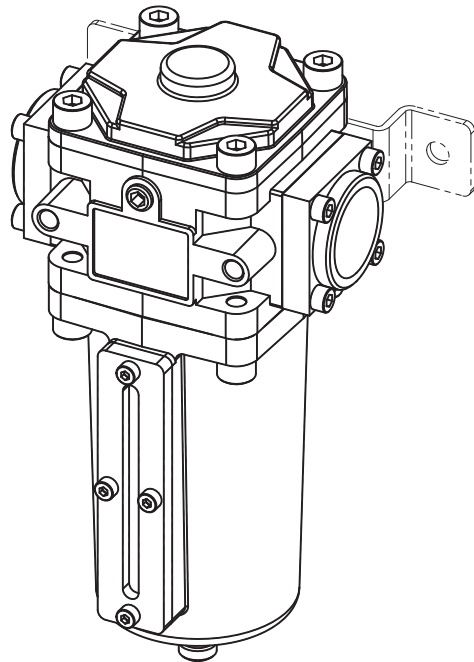
Bowl Capacity

- 260 cc (15.87 cu ins)

Operating Media

- Gases - air, inert gas and sweet (natural) gas

NOTE: To prevent freezing of the condensate within the product, the media dew point must be at least 10 °C below the lowest ambient temperature the product will be exposed to.



Construction Materials

- Body/bonnet/bowl and internals: 316L stainless steel
Note: on auto-drain version float is nylon, polyoxymethylene and rubber.
- Element: 40 micron sintered polypropylene (5 micron option available - suffix product code with '05')
- Seals: Standard option - Fluoroelastomer
Low temperature option - EPDM and Fluorosilicone¹

¹ The use of lubrication upstream of the product is not recommended for low temperature applications.

Accessories Available

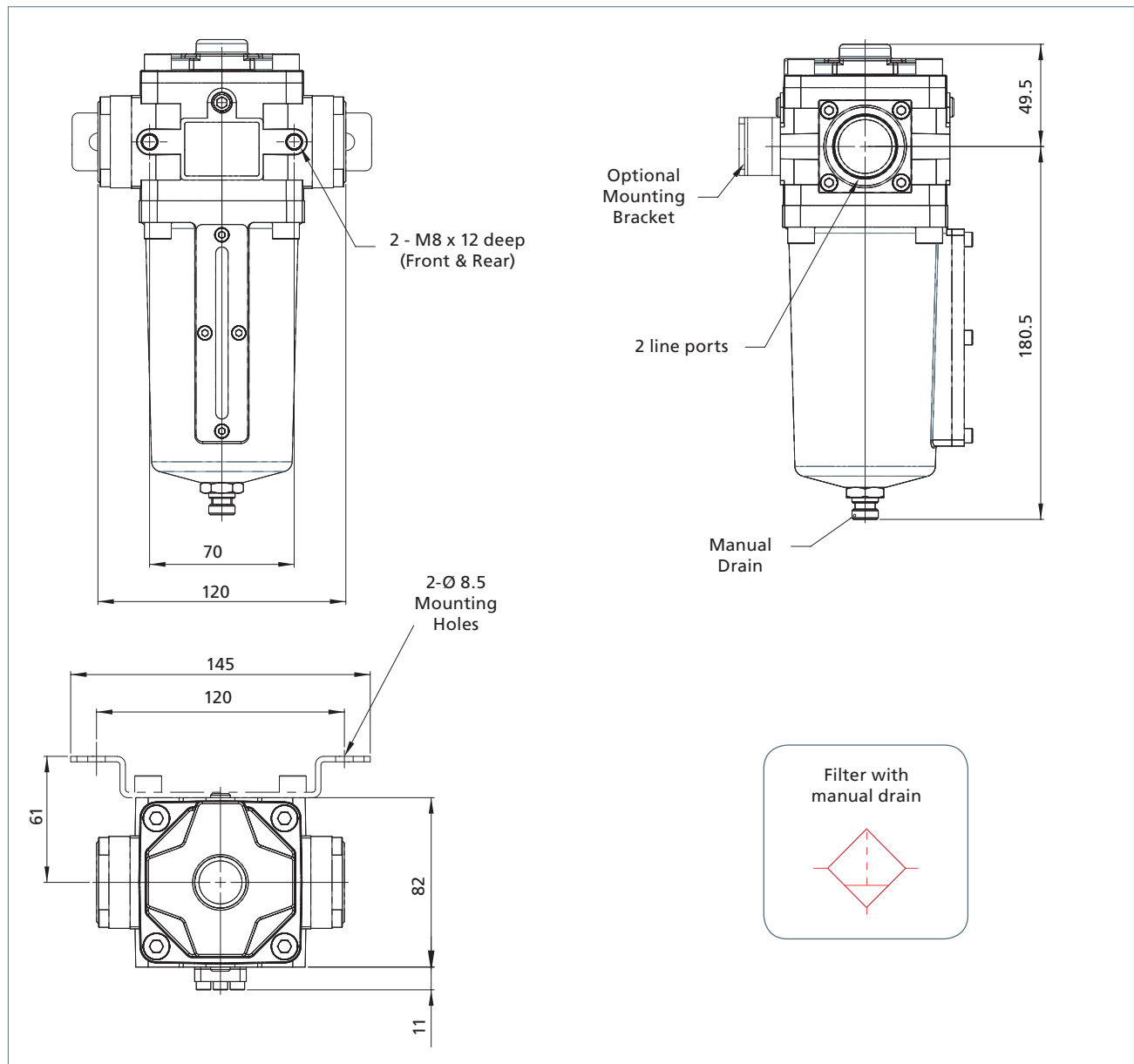
- Mounting brackets

See page 27 for ordering details

Certification Options Available

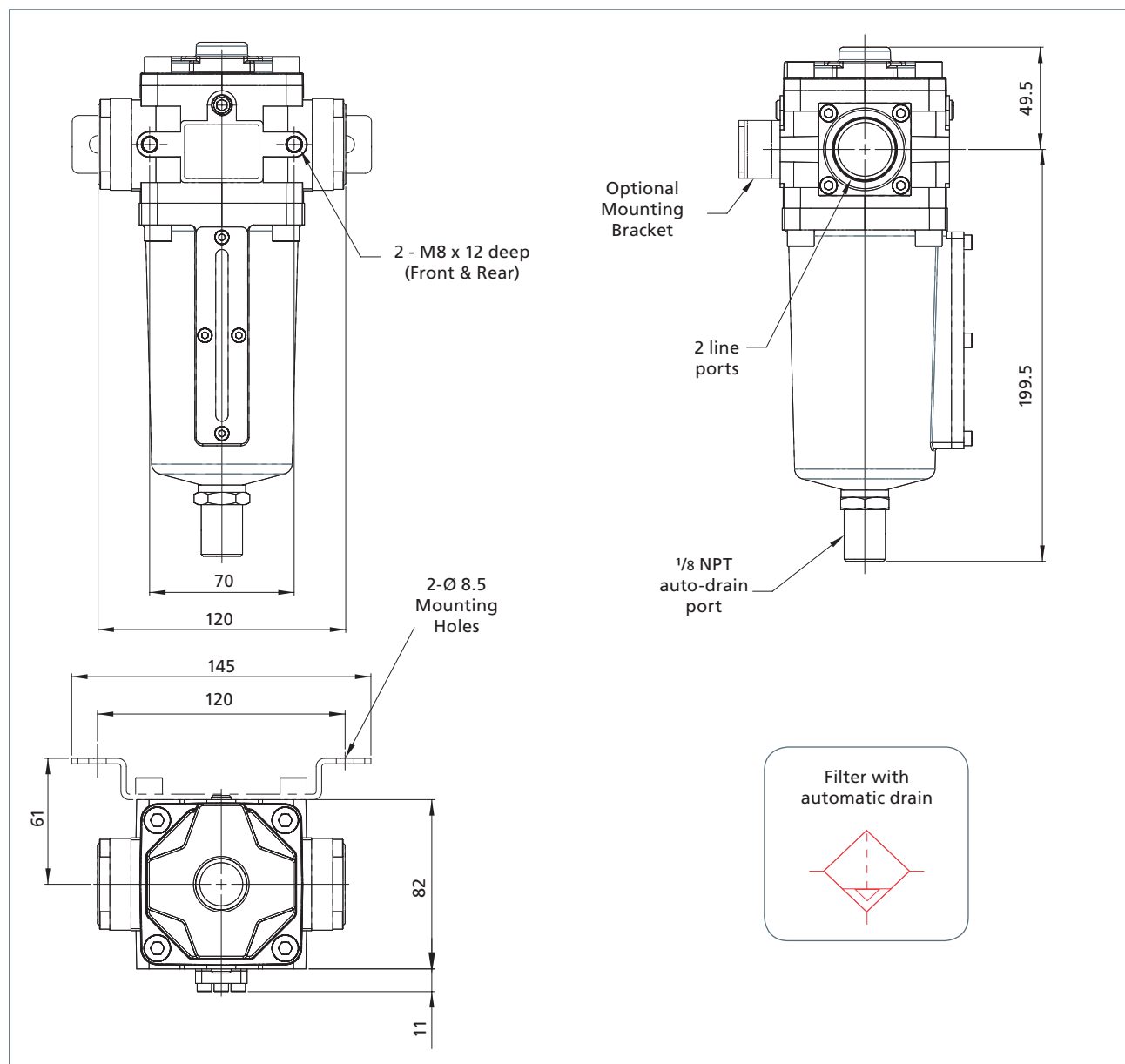


3500 Series air service units – 3/4" to 1" Filters - Engineering Drawings (manual drain)



Size	Filter	Max Inlet Pressure bar	Weight kg	Cv
3/4"	Manual Drain	20	3.75	6.5
1"			3.75	8.8

3500 Series air service units – 3/4" to 1" Filters - Engineering Drawings (auto drain)



Size	Filter	Max Inlet Pressure bar	Weight kg	Cv
3/4"	Auto Drain	17	3.75	6.5
1"			3.75	8.8

3500 Series air service units – 3/4" to 1" Filters - Flow Characteristics

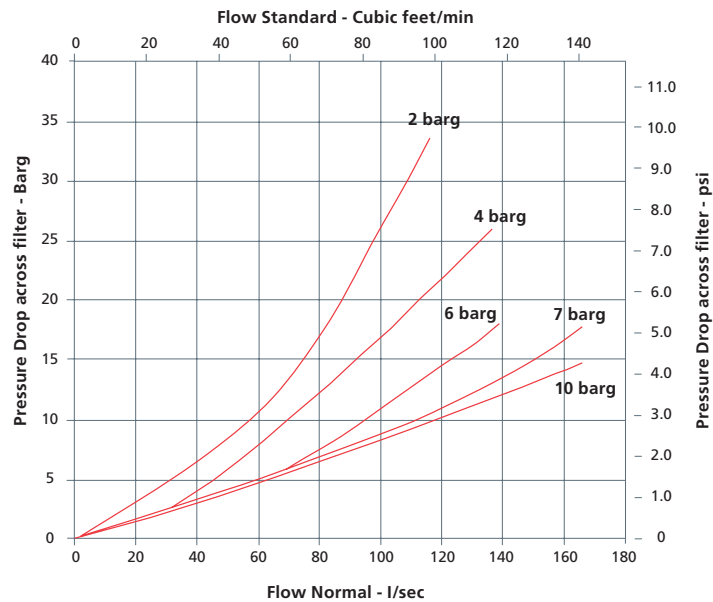
3500 Series Coding Chart - Filters

Additional Options

Size		Type		Material		Seals °C (°F)		Max Inlet Pressure bar (psi)		Port Style		Filter Element (40 micron standard)		Approval	
6	3/4"	FLM	Manual Drain	S	Stainless	V	Standard -20 (-4)	17	17 (247) (FLA only)	1	BSP	05	5 micron	/ATEX	Ex II 2G c T6
8	1"	FLA	Auto Drain			L ¹	Low Temp -50 (-58)	20	20 (290) (FLM only)	2	NPT		w/o option		w/o option

•	•	S	•	•	•	•	•
---	---	---	---	---	---	---	---

¹ Low temperature version not available in auto-drain



3500 Series air service units – ¾" to 1" Pressure Regulators

A 316L stainless steel unit for pressure regulation of compressed air and gases for the actuation industries.

Features and Benefits

- Specifically designed for severe environments
- Non or self-relieving
- 316L stainless steel construction
- Large flow characteristics

Media & Ambient Temperature Range

- Standard temperature
-20 to + 80 °C (-4 to +176 °F)
- Low temperature version
-50 to +80 °C (-58 to +176 °F)

Note: When product is ordered as /ATEX ambient temperature is limited to +40°C (104 °F) Ex II 2G c T6.

Maximum Relief Flow

- At 2 bar (29 psi) secondary pressure
0.5 cc/sec (0.03 cu in/sec)

Flow

At 7 bar (102 psi) supply pressure, 6 bar (87 psi) secondary pressure, 1 bar (14.5 psi) pressure drop.

- 7,800 l/min (274 SCFM)

Ports NPT

(BSP option available - consult factory for part codes)

- ¾", 1"

Gauge Ports

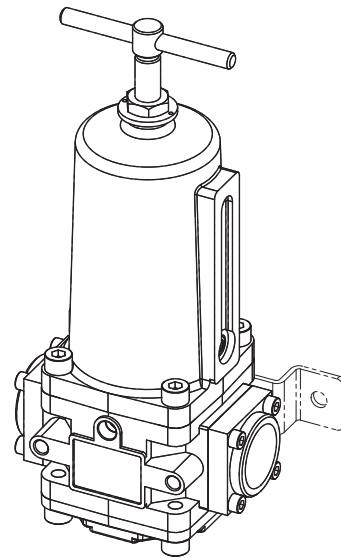
- 1/8" NPT

Relief Vent Port

- 1/8" NPT (fitted with breather)
Note: Not fitted on low temperature option

Size	Regulated Pressure bar (psi)	Max Inlet Pressure bar	Weight kg	Cv
¾"	0.50 to 2.0 (7.2 to 29)	20	5.0	6.5
1"			5.0	8.8
¾"	0.50 to 4.0 (7.2 to 58)	20	5.0	6.5
1"			5.0	8.8
¾"	0.50 to 7.0 (7.2 to 102)	20	5.0	6.5
1"			5.0	8.8
¾"	0.50 to 10.0 (7.2 to 145)	20	5.0	6.5
1"			5.0	8.8

Certification Options Available



Operating Media

- Gases - air, inert gas, sweet (natural) gas

Note: To prevent freezing of the condensate within the product, the media dew point must be at least 10 °C below the lowest ambient temperature the product will be exposed to

Construction Materials

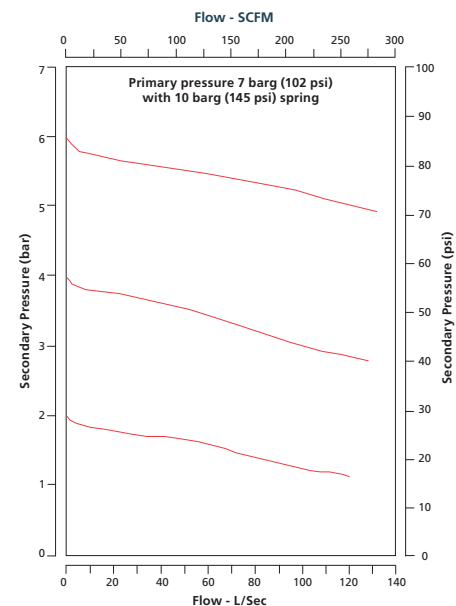
- Body/bonnet/bowl and internals: 316L stainless steel
- Seals: Standard option - Fluoroelastomer
Low temperature option - EPDM and Fluorosilicone¹

¹ The use of lubrication upstream of the product is not recommended for low temperature applications

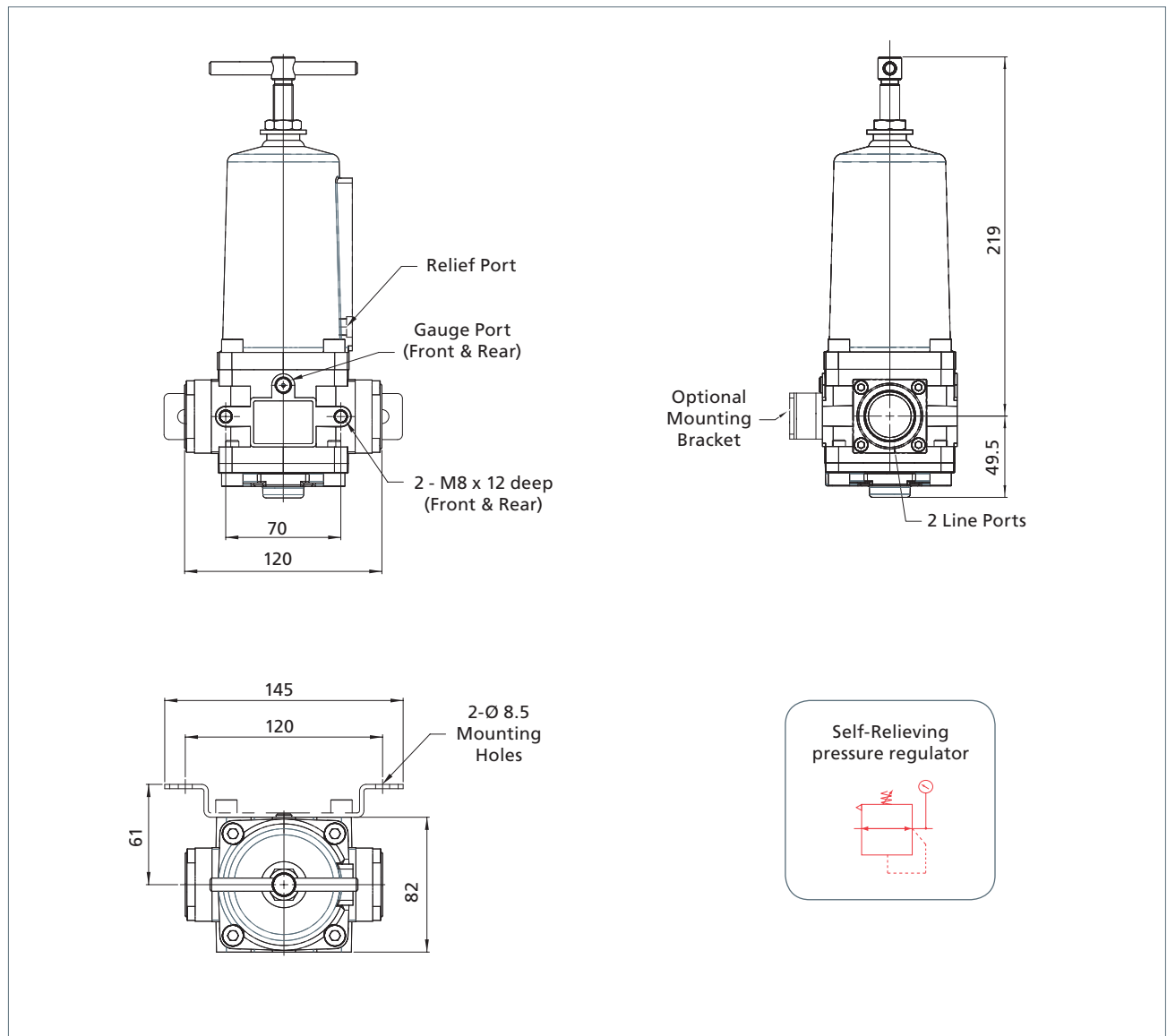
Accessories Available

- Mounting brackets
- Stainless steel pressure gauge

See page 26-28 for ordering details



3500 Series air service units – 3/4" to 1" Pressure Regulators - Engineering Drawings



3500 Series Coding Chart - Pressure Regulators

Additional Option

Size		Type		Material		Seals °C (°F)		Regulated Pressure bar (psi)		Port Style		Approval			
6	¾"	PRV	Self Relieving	S	Stainless	V	Standard -20 (-4)	02	2 (29)	1	BSP	/ATEX	Ⓔ II 2G c T6		
8	1"	PRN	Non Relieving	S		L	Low Temp -50 (-58)	04	4 (58)	2	NPT		w/o option		
										07	7 (102)				
										10	10 (145)				
●		●		S		●		●		●		●			

3500 Series air service units – ½" Lubricator

A 316L stainless steel unit providing lubrication of compressed air for the actuation industries.

Features and Benefits

- Specifically designed for severe environments
- Accurate drip rate adjustment
- Can be filled under pressure
- Transparent sight feed dome
- 316L stainless steel construction
- Built in flow sensor to automatically adjust lubrication delivery to meet wide air flow demand

Media & Ambient Temperature Range

- -20 to + 80 °C (-4 to +176 °F)

Note: When product is ordered as /ATEX ambient temperature is limited to +40 °C (104 °F) Ex II 2G c T6

Working Pressure

- 17 bar (247 psi)

Ports NPT

(BSP option available - consult factory for part codes)

- ½" NPT

Bowl Capacity

- 380 cc (23.2 cu ins)

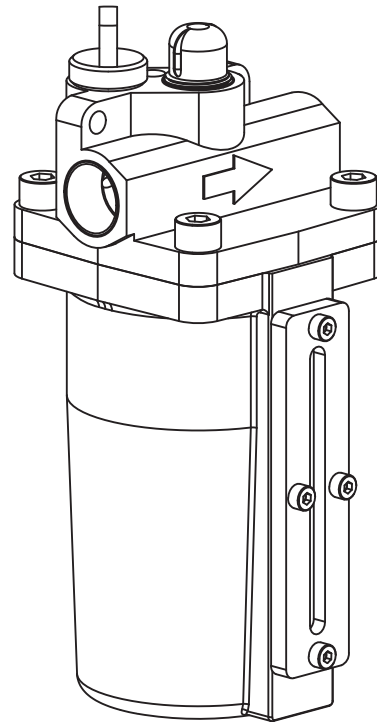
Operating Media

- Gases - air, inert gas and sweet (natural) gases

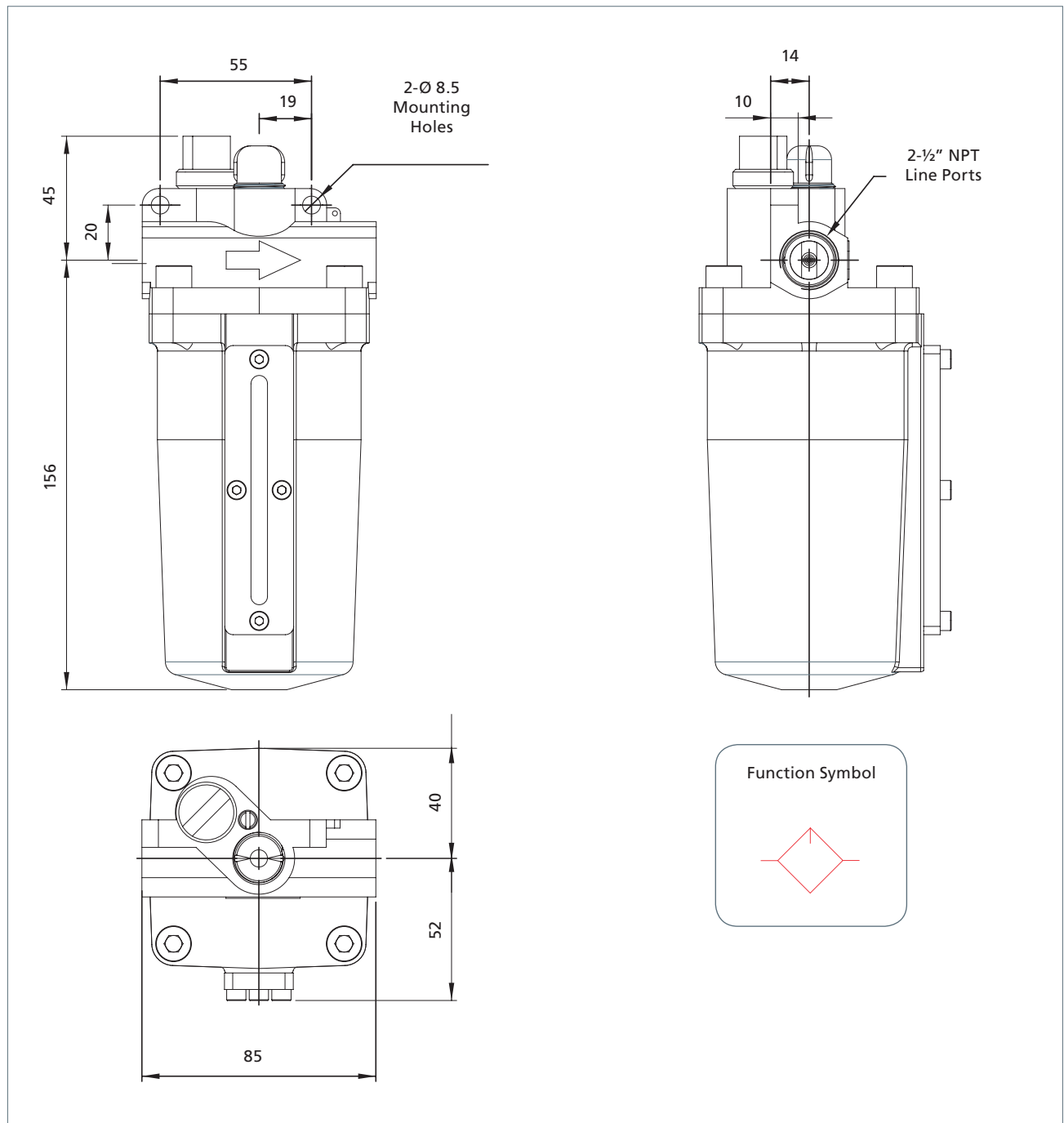
Note: To prevent freezing of the condensate within the product, the media dew point must be at least 10 °C below the lowest ambient temperature the product will be exposed to.

Construction Materials

- Body/bonnet/bowl and internals: stainless steel 316L
- Seals: Nitrile
- Bowl: 316 stainless steel
- Acrylic flow and sight glass



3500 Series air service units – ½" Lubricator - Engineering Drawings

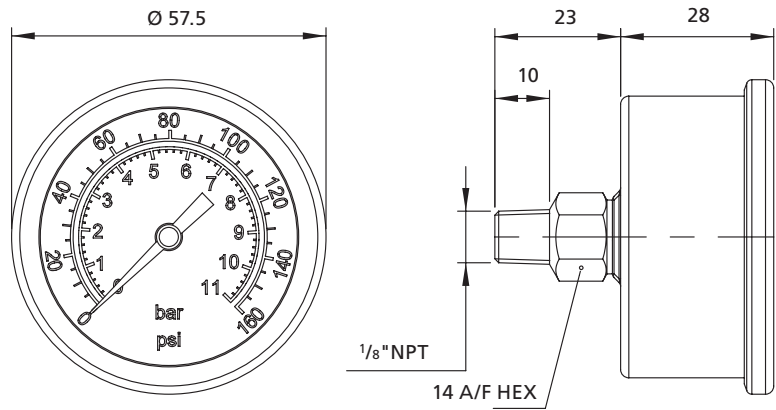


3500 Series Coding Chart - Lubricator

Size		Type		Material		Seals		Pressure bar (psi)		Port Style	
4	1/2"	LUB	LUB	S	Stainless	N	Nitrile	17	17 (246)	2	NPT
4		LUB		S		N		17		2	

3500 Series air service units – Accessories for 3/4" to 1" units - supplied separately

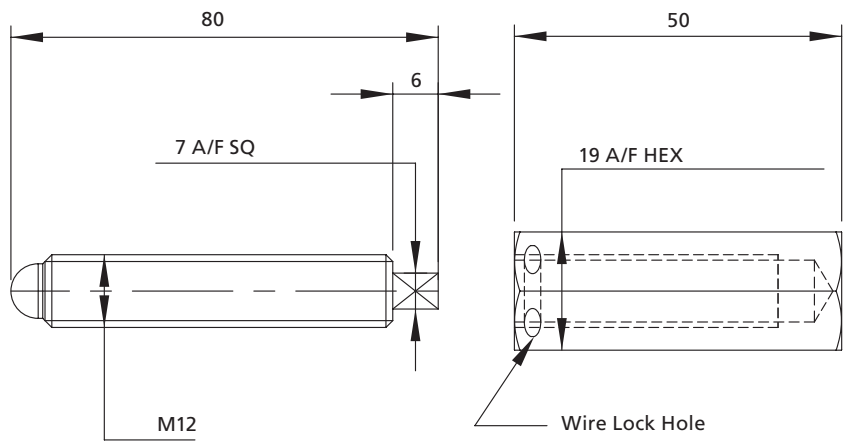
Pressure gauge SS-316L - Glycerine filled



Product Code	Size mm	Regulated Pressure bar
SSF153N/2GLY	50	0 to 2
SSF153N/4GLY	50	0 to 4
SSF153N/11GLY	50	0 to 11

Please consult factory for low temperature version if required.

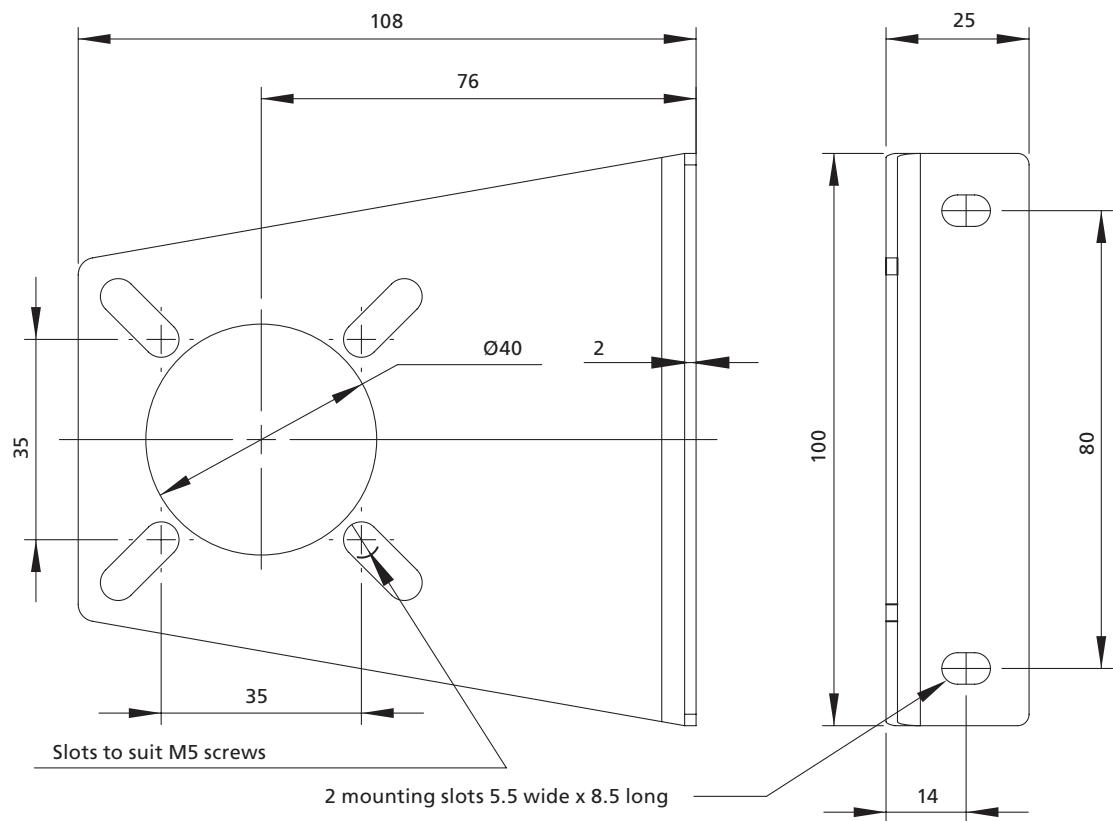
Tamperproof cap kit



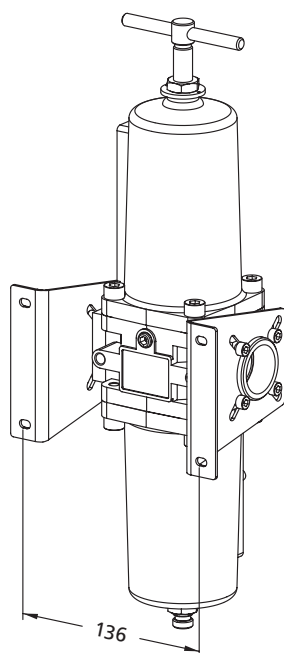
Product Code	Description
SSAF638/22	Kit comprises of 1 pressure adjusting screw and 1 tamperproof cap. All material stainless steel

3500 Series air service units – Accessories for 3/4" to 1" units - supplied separately

Mounting bracket



Filter / Regulator with Mounting Brackets

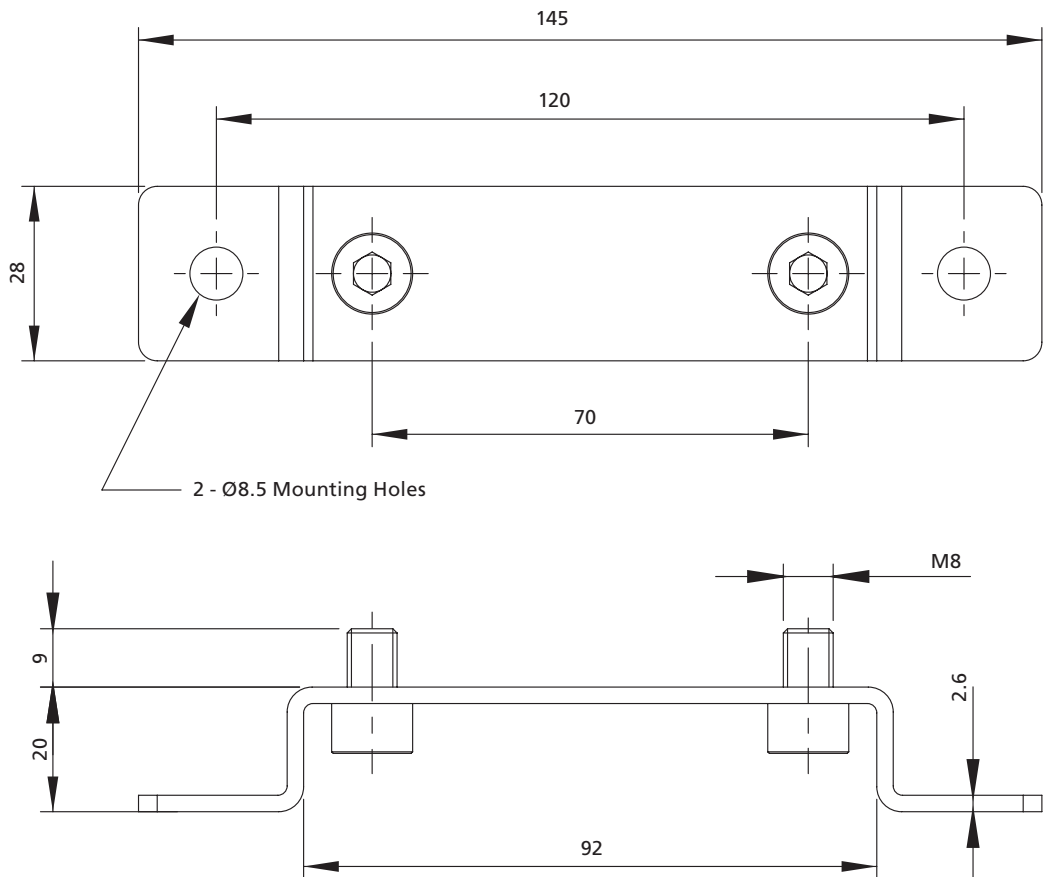


Product Code	Suitable for
SSF8110-7	3/4" & 1" units

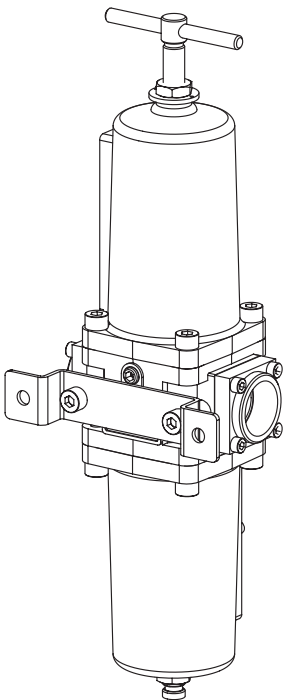
Component material 316 stainless steel.
Brackets are supplied complete with fasteners.
Note: Part number above is for single item.

3500 Series air service units – Accessories for 3/4" to 1" units - supplied separately

Rear mounting bracket



Filter / Regulator with Rear Bracket



Product Code	Description
SSAF638-26	Kit comprises of 1 mounting bracket and 2 - M8 x12 cap head screws. All material stainless steel.