

FINE CONTROLS (UK) LTD



Fine Controls have been supplying process controls & instrumentation equipment since 1994, & now serves an ever expanding customer base, both in the UK & globally.

We offer a full range of valve & instrumentation products & services, with our product range representing leading technologies & brands:

Flow: Flow Meters & Transmitters, Flow Switches, Flow Control Valves & Batch Control Systems

Temperature: Temperature Probes & Thermowells, Temperature transmitters, Temperature Regulators & Temperature Displays

Level: Level Transmitters & Switches

Pressure: Pressure Gauges & Transmitters, Precision & High Pressure Regulators & I-P Converters, Volume boosters.

Precision Pneumatics: Pressure Regulators, I-P Converters, Volume Boosters, Vacuum Regulators

Valves: Solenoid & Pneumatic Valves, Control Valves & Positioners, Actuated Ball, Globe or Diaphragm Valves & Isolation Valves

Services: Repair, Calibration, Panel Build, System Design & Commissioning

A rotork® Brand
FAIRCHILD



bürkert



SIEMENS



alcon
SOLENOID VALVES

A rotork® Brand



MIDLAND-ACS
A rotork® Brand



Honeywell



Bourdon
Baumer Group



SOLDO
CONTROLS

A rotork® Brand



Fine Controls (UK) LTD, Bassendale Road, Croft Business Park,
Bromborough, Wirral, CH62 3QL UK
Tel: 0151 343 9966
Email: sales@finecontrols.com

PROCESS SIGNAL ISOLATORS

SEM1010 ISOLATING SIGNAL REPEATER

- Provides Isolation between two devices using the same power supply
- (4 to 20) mA Output
- Galvanic Isolation 500 V DC Flash Tested 1 KV
- High Accuracy 0.05%
- 21 mm Wide



INTRODUCTION

The SEM1010 is designed to provide an isolation barrier between a field mounted (4 to 20) mA transmitter and the process monitoring system. The isolator output is a two wire (4 to 20) mA current sink. The SEM1010 derives its power from the output loop. This isolator requires no user adjustments during commissioning, apart from an initial test, to ensure it operates correctly over its full working range. Minor adjustments can be made to the calibration of the device, by means of the two front panel accessible calibration potentiometers. Incorrect connection in the loop will not damage the device as long as the specified maximum currents/voltages are not exceeded.

SPECIFICATIONS @ 20 °C

INPUT	TYPE	Two wire (4 to 20) mA Powers & monitors two wire Transmitter from the loop output (4 to 20) mA (25Max)
	RANGE	Current limited
	PROTECTION	(5 to 15) V Max
	Tx SUPPLY	35 Volts
	MAX LOOP VOLTS	
OUTPUT	TYPE	(4 to 20) mA Current Sink Reverse protected
	LOOP DROP	5 V @ 20 mA (with a 10 V Tx drop)
		6.5 V max @ 20 mA 10 V max @ 4 mA

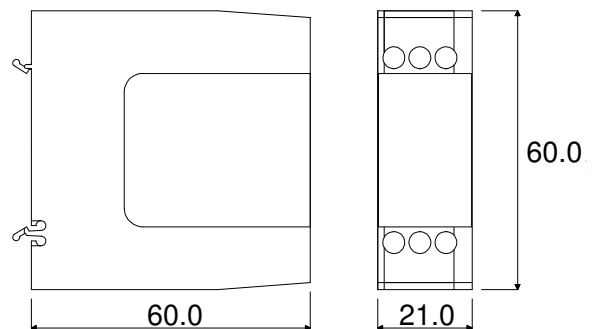
GENERAL SPECIFICATION

ISOLATION	500 V DC (flash tested @ 1 kV) (Isolation method, opto coupler / transformer)
ENVIRONMENT	BS EN61010-1 POLLUTION DEGREE 2; INSTALLATION CAT II; CLASS I
AMBIENT	(0 to 70) °C ; (10 to 95) % RH non-condensing
LINEARITY	0.05 %
STABILITY	0.01 % / °C
RESPONSE TIME	Less than 100 mS to reach 70 % of final value.
EMC Tested to	BS EN 61326
ADJUSTMENT	Front Entry Fine Zero and Span Adjustment

MECHANICAL DETAILS

CONNECTION	Captive clamp screws
CABLE SIZE	Maximum 4 mm sq solid / 2.5 mm sq stranded
CASE MATERIAL	Grey Polyamide
FLAMMABILITY	To UL94-VO VDE 0304 Part 3, Level IIIA
DIMENSIONS	(60 x 60 x 21) mm (67.5 above rail)
MOUNTING	Snap on "top hat" rail (DIN EN 50022-35)

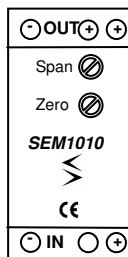
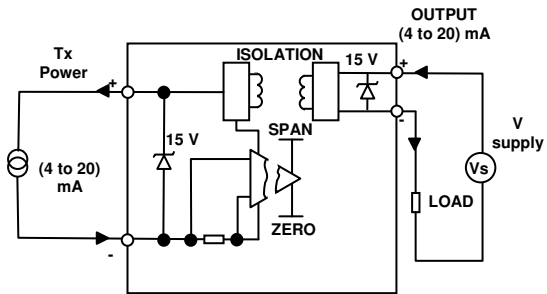
(All dimensions in mm)



PROCESS SIGNAL ISOLATORS

SCHEMATIC

SEM1010



ORDER CODE: SEM1010