

FINE CONTROLS (UK) LTD



Fine Controls have been supplying process controls & instrumentation equipment since 1994, & now serves an ever expanding customer base, both in the UK & globally.

We offer a full range of valve & instrumentation products & services, with our product range representing leading technologies & brands:

Flow: Flow Meters & Transmitters, Flow Switches, Flow Control Valves & Batch Control Systems

Temperature: Temperature Probes & Thermowells, Temperature transmitters, Temperature Regulators & Temperature Displays

Level: Level Transmitters & Switches

Pressure: Pressure Gauges & Transmitters, Precision & High Pressure Regulators & I-P Converters, Volume boosters.

Precision Pneumatics: Pressure Regulators, I-P Converters, Volume Boosters, Vacuum Regulators

Valves: Solenoid & Pneumatic Valves, Control Valves & Positioners, Actuated Ball, Globe or Diaphragm Valves & Isolation Valves

Services: Repair, Calibration, Panel Build, System Design & Commissioning

A rotork® Brand
FAIRCHILD



bürkert



SIEMENS



alcon
SOLENOID VALVES

A rotork® Brand



MIDLAND-ACS
A rotork® Brand



Honeywell



Bourdon
Baumer Group



SOLDO
CONTROLS

A rotork® Brand

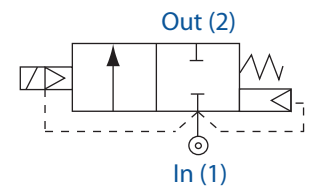


Fine Controls (UK) LTD, Bassendale Road, Croft Business Park,
Bromborough, Wirral, CH62 3QL UK
Tel: 0151 343 9966
Email: sales@finecontrols.com



Features & Benefits

- Ideal for High Pressure Applications
- Compact Valve Design
- Piston Operated
- Choice of Valve Body Material and Seals
- **Response time 15-60ms**



Electrical Characteristics

Coil Voltage AC 50Hz (~):	24v, 110v, 120v, 230v
Coil Voltage AC 60Hz (~):	24v, 110V, 120v, 220v
Voltage tolerance:	+10% or -10%
Duty Cycle:	100% ED
Protection Class (Std):	IP65 (BS EN 60529)
Electrical Connection (Std):	PG9 Din Connector DIN 43650/ISO 4400 (EN 175301-803) Form 'A'
Coil Insulation:	Class H (BS EN 60085) 180°C (E5 type)
Power Rating:	19VA, 14.5 watts

Specifications

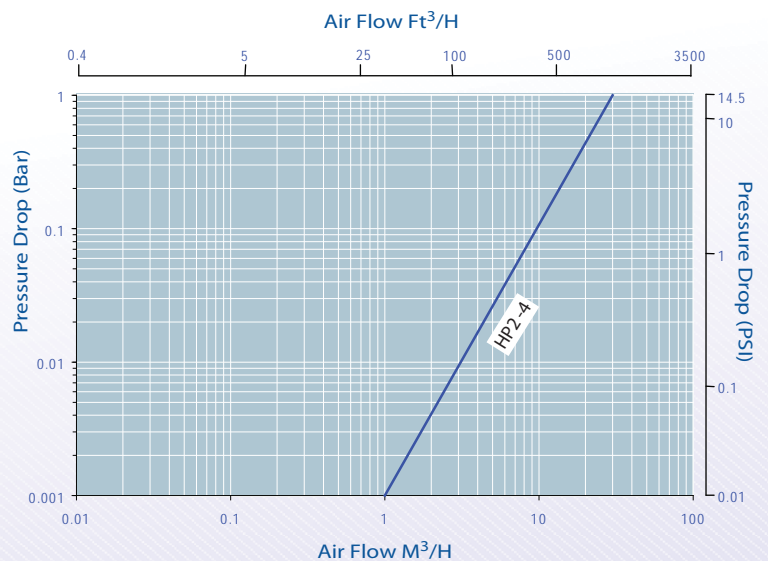
Function:	Normally Closed, Energise to Open
Ambient Temperature:	-10°C to +50°C
Maximum Viscosity:	115 SSU
Body Material (Std):	Brass CZ122
Flange Tube:	Stainless Steel 303
Plunger and Top Stop:	Stainless Steel 430FR
Springs:	Stainless Steel 302
Seal Material (Std):	Metal/PTFE
Connection type (Std):	BSP
Shading Coil:	Copper

Features

Pipe Size	Qn	OPD (Bar)	P.Max	Orifice	Cat No.
1/4"	500	1.0 - 100	140	8.0	HP2
3/8"	500	1.0 - 100	140	8.0	HP3
1/2"	500	1.0 - 100	140	8.0	HP4

Qn = Flow of air in litres/min @ 20°C. Input 6 bar Δp of 1 bar

Flow Data

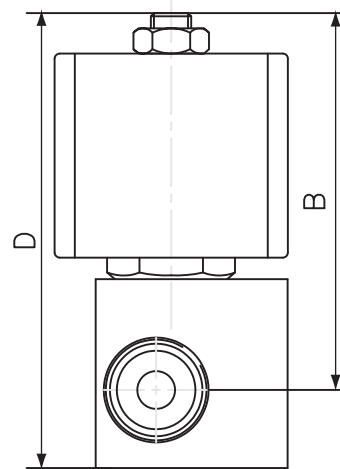
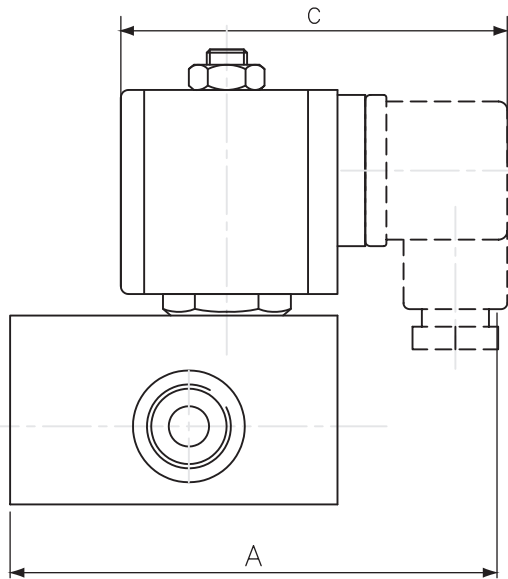


How to use the Flow Chart

1. Select the required flow.
2. Note the corresponding orifices/model and pressure drop.
3. Using orifices/model, (refer to the Features panel) for technical information



HP Series
2/2 Normally Closed



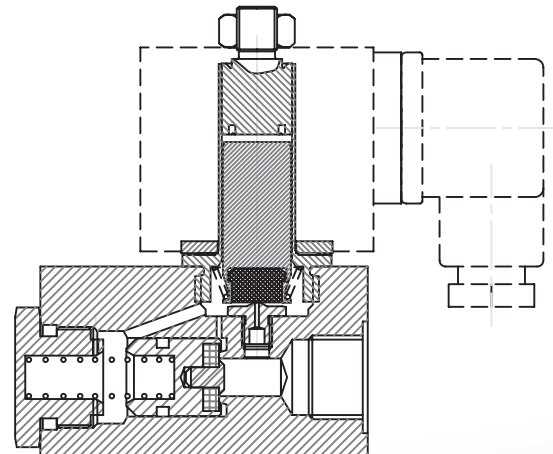
Note:

- PED Compliant
- Solenoid Coil may be rotated to any angle.

Dimensions

Size	A	B	C	D	Weight (Kg)
1/4"	67	75	75	90	0.70
3/8"	67	75	75	90	0.70
1/2"	100	75	75	92	0.70

Dimensions given in mm



Options

Solenoid Enclosure		
Protection Class	Electrical Entry	Ambient
EExd T6 (IP67)	M20 X 1.5 Female	-50°C to +40°C
EExd T4 (IP67)	M20 X 1.5 Female	-50°C to +70°C
Exm T5 (IP65)	M16 X 1.5 Male FLYING LEAD	-20°C to +40°C

See solenoid enclosures for specific details

- LED power indicator option
- Inline connection versions
- Mirror pattern connection versions

Body Material
Stainless Steel 316

Seal Material	Media Temperature Range
EPDM	-50°C to +120°C
Viton	-20°C to +150°C
PTFE	-200°C to +180°C

See corrosion reference guide and sealing solutions for material compatibility

Mounting

