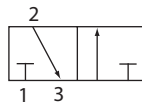




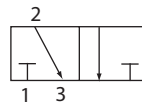
**Features & Benefits**

- 316 Stainless Steel construction as standard
- Designed for actuator control
- Large porting for high Kv
- Low power consumption
- Zero pressure rated
- Manual override and reset options available
- **Response time 100-150ms**

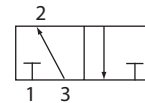
3/2  
Normally Closed



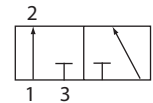
3/2  
Diverter



3/2  
Normally Open



3/2  
Changeover



**Specifications**

<b>Function:</b>	Normally Closed, Normally Open, Universal
<b>Ambient Temperature:</b>	-20°C to +60°C
<b>Maximum Viscosity:</b>	115 SSU (liquid)
<b>Body Material (Std):</b>	Stainless Steel 316
<b>Seal Material (Std):</b>	Nitrile
<b>Connection Type:</b>	NPT

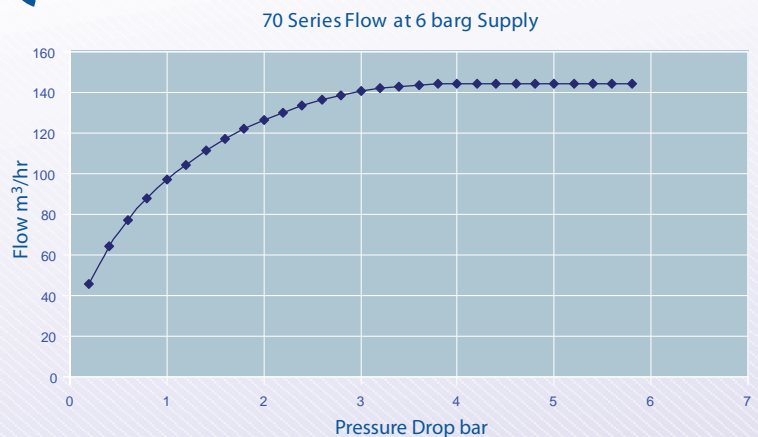
**Features**

Pipe Size	Kv	Operating Pressure Differential (Bar)		Power Watts	Internal Orifice mm	Weight Kg
		AC Voltages	DC Voltages			
1/4"	1.4	0 - 12	0 - 12	3.5	10.00	3.20
3/8"	1.4	0 - 12	0 - 12	3.5	10.00	3.20
1/2"	1.4	0 - 12	0 - 12	3.5	10.00	3.20

**Electrical Characteristics**

<b>Coil Voltage DC (=):</b>	12v, 24v, 110v
<b>Coil Voltage AC 50Hz (~):</b>	24v, 110v, 230v
<b>Protection Class (Std):</b>	Exd IIC T6
<b>Electrical Connection:</b>	Cable connector from M20 X 1.5 female conduit
<b>Ingress Protection:</b>	IP67
<b>Coil Insulation:</b>	Class H

**Flow Data**

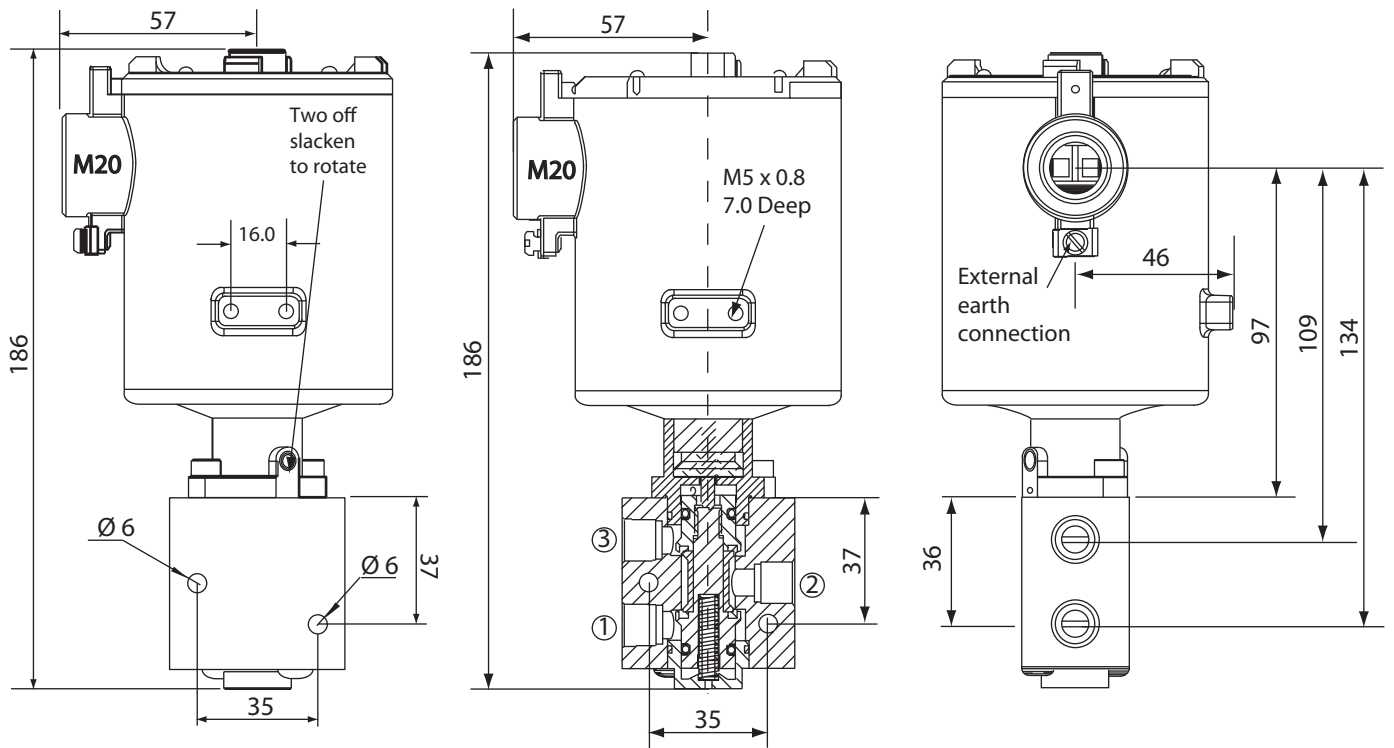


Certification Options Available



**ITT**

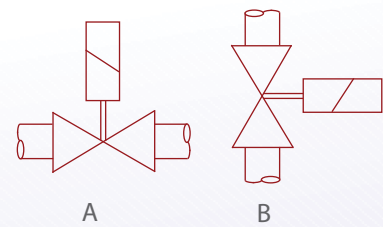
**Dimensions**



**Note:**

- Tested in accordance with BS EN 12266-1
- PED Compliant
- Dimension given in mm

**Mounting**



**Options**

<i>Solenoid Enclosure</i>
<i>Electrical Entry</i>
M20 X 1.5 Female 1/2" NPT F

<i>Body Material</i>
Stainless Steel 316

<i>Seal Material</i>	<i>Media Temperature Range</i>
EPDM	-50°C to +120°C
Viton	-20°C to +150°C

Optional surge suppression diode  
High pressure versions  
Low temp options

See corrosion reference guide and  
sealing solutions for material compatibility