

MANUALLY OPERATED (PAD)

General Description

A range of compact 3/2 and 5/2 manually operated spool valves in Stainless Steel for use on gases.

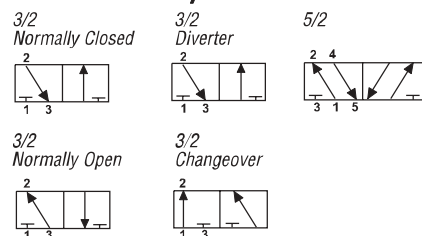
- Panel mounted option
- Closed centre
- Compact

Operating Medium

Gases

Filtered non-lubricated air, inert, sweet (natural) gases.

Functional Symbols



Technical Data

Ports

- 1/4" NPT (*BSP option available*)
- 1/8" NPT pilot ports

Working Temperature

- -20°C to +180°C (-4°F to +356°F)

Low temperature version

- -50°C (-58°F) (optional)

Working Pressure (gases & liquids)

- 12 bar (174 psi) Maximum

Maximum Flow

- 6 bar (87 psi), 1 bar (14.5 psi) differential
- 3/2 valves - 1000 L/min (35.3 SCFM)
- 5/2 valves - 1200 L/min (42.4 SCFM)

Cv (Kv)

- 3/2 valves - 1.0 (15)
- 5/2 valves - 1.2 (17)

Operating Force

- 10 bar (145 psi) differential
- 3/2 valves 76 N (17 lbf)
- 5/2 valves 89 N (20 lbf)

Construction Materials

- Stainless Steel AISI 316L to NACE MR-01-75 Body
- Stainless steel AISI 316L to NACE MR-01-75 Spool
- 316 Stainless Steel Spring
- Fluoroelastomer Seals
- Phenolic Resin Pad



Preferred Models

Model Number	Description	Weight kg (lbs)	Symbol
2326M27-VR2B	1/4" NPT 3/2 Pad operated, spring return	0.50 (1.10)	
2326B77-VR2B	1/4" NPT 3/2 Pad operated, push - pull	0.61 (1.34)	
2326B773VR2B	1/4" NPT 3/2 Pad operated, push - pull with detent	0.63 (1.39)	
2326B17-VR2B	1/4" NPT 3/2 Pad operated, pilot air return	0.63 (1.39)	
2526M27-VR2B	1/4" NPT 5/2 Pad operated, spring return	0.95 (2.09)	
2526B77-VR2B	1/4" NPT 5/2 Pad operated, push - pull	0.93 (2.05)	
2526B773VR2B	1/4" NPT 5/2 Pad operated, push - pull with detent	0.95 (2.09)	
2526B17-VR2B	1/4" NPT 5/2 Pad operated, pilot air return	0.95 (2.09)	

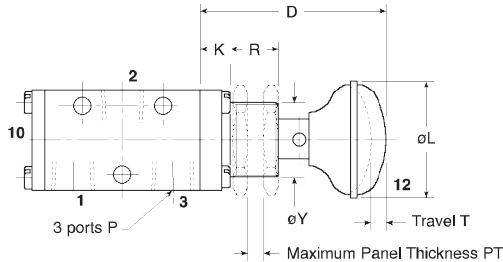
For panel mounted versions, substitute code 5 for - in position 8.

MANUALLY OPERATED PAD

INSTALLATION DIMENSIONS mm (inches)

3/2 Pad Operated, Spring Return

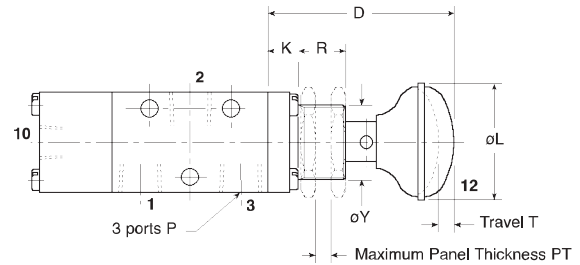
Pad Operated
2326M27-VR2B, 2326M275VR2B



For basic valve dimensions, see 3/2 spring return bases on page 1500.7

3/2 Pad Operated (Push-Pull) 3/2 Pad Operated, Pilot Air Return

Pad Operated (Push-Pull) 2326B77VR2B, 2326MB775VR2B
Pad Operated (Push-Pull) 2326B773VR2B
Pad Operated, Pilot Air Return 2326B17VR2B, 2326B175VR2B



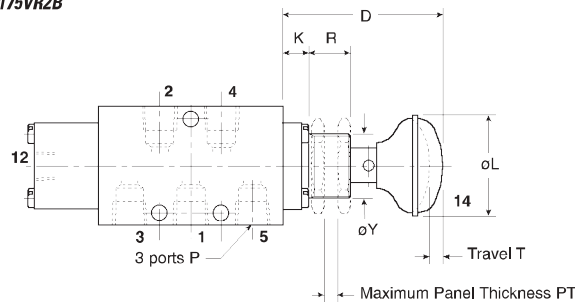
For basic valve dimensions, see 3/2 spring return bases on page 1500.7

Model Number	D	K	L	P	R	T	PT
2326M27-VR2B	60 (2.36)	10 (0.39)	38 (1.50)	1/4" NPT 1/4" NPT	15 (0.59)	5 (0.20)	5 (0.20)
2326B77-VR2B	60 (2.36)	10 (0.39)	38 (1.50)	1/4" NPT 1/4" NPT	15 (0.59)	5 (0.20)	5 (0.20)
2326B773VR2B	60 (2.36)	10 (0.39)	38 (1.50)	1/4" NPT 1/4" NPT	15 (0.59)	5 (0.20)	5 (0.20)
2326B17-VR2B	60 (2.36)	10 (0.39)	38 (1.50)	1/4" NPT 1/4" NPT	15 (0.59)	5 (0.20)	5 (0.20)

Panel mounting thread øY is 15/16" dia. x 26 TPI Whit Form. Panel mounted models 2326M275VR2B, 2326B775VR2B and 2326B175VR2B are supplied with 2 off locknuts as indicated.

5/2 Pad Operated, Spring Return, 5/2 Pad Operated (Push-Pull), 5/2 Pad Operated, Pilot Air Return

Pad Operated (Push-Pull) 2526M27-VR2B, 2526M275VR2B
Pad Operated (Push-Pull) 2526B77-VR2B, 2526B775VR2B
Pad Operated (Push-Pull) with detent 2526B773VR2B
Pad Operated, pilot air return 2526B17-VR2B, 2526B175VR2B



For basic valve dimensions, see 5/2 spring return or 5/2 pilot return bases on page 1500.7

Model Number	D	K	L	P	R	T	PT
2526M27-VR2B	60 (2.36)	10 (0.39)	38 (1.50)	1/4" NPT 1/4" NPT	15 (0.59)	6 (0.24)	5 (0.20)
2526B77-VR2B	60 (2.36)	10 (0.39)	38 (1.50)	1/4" NPT 1/4" NPT	15 (0.59)	6 (0.24)	5 (0.20)
2526B773VR2B	60 (2.36)	10 (0.39)	38 (1.50)	1/4" NPT 1/4" NPT	15 (0.59)	6 (0.24)	5 (0.20)
2526B17-VR2B	60 (2.36)	10 (0.39)	38 (1.50)	1/4" NPT 1/4" NPT	15 (0.59)	6 (0.24)	5 (0.20)

Panel mounting thread øY is 15/16" dia. x 26 TPI Whit Form. Panel mounted models 2526M275VR2B, 2526B775VR2B and 2526B175VR2B are supplied with 2 off locknuts as indicated.